



Outdoor Spaces

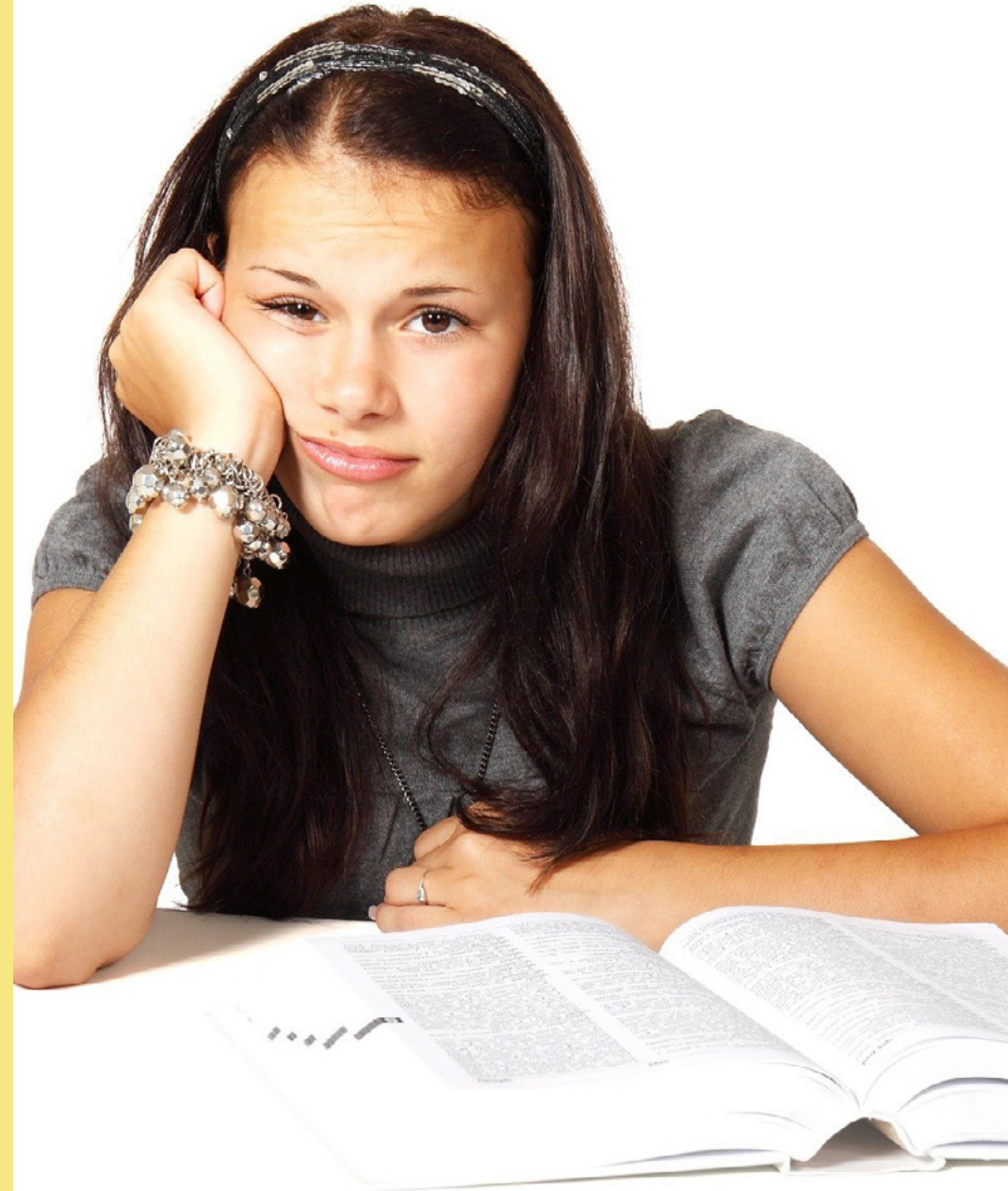
LESTER
VANA

Ask yourself

For all the challenges and frustrations the pandemic has uncovered, we are now presented with an opportunity to rethink school and work environments entirely.

Were school and work really working before?
We can design those environments differently...

What should we be demanding now?





A classroom on a ferry in New York City, circa 1915.
Bureau of Charities, via Library of Congress

Perceived Benefits

- Increased productivity
- Greater confidence
- Encourage safe communal spaces
- Stimulate creativity and collaboration
- Improve wellness
- Reduce stress
- Provide flexible spaces
- Promote learning and brain development



Pavilion

Outdoor covered area
Semi-permanent / long term use
Stays outside away from direct weather
Specific Versteel products adaptable
Specific durable materials recommended

Pop-Up

Outdoor covered area
Temporary / day use only
Products come in each evening
Adaptable for most Versteel products
Expanded material recommendations

CONTENTS

01

Pavilion Outdoor Spaces

Semi-permanent outdoor sheltered areas

Deci, OHI, Quanta Max, Sate

02

Pop-Up Outdoor Spaces

Temporary outdoor sheltered areas

Adaptable for most Versteel Products

03

Power, Storage & Collaboration

V Power System, Entourage Utility Carts, Mobile Screens
with writable white powder coat

04

Materials

Outdoor primer process, powder coat colors, top material
options, poly shells

05

Warranty & Care

Keep under covered sheltered areas out of direct weather
and sunlight

CONTENTS

01	Pavilion Outdoor Spaces Semi-permanent outdoor sheltered areas Deci, OHI, Quanta Max, Sate
02	Pop-Up Outdoor Spaces Temporary outdoor sheltered areas Adaptable for most Versteel Products
03	Power, Storage & Collaboration V Power System, Entourage Utility Carts, Mobile Screens with writable white powder coat
04	Materials Outdoor primer process, powder coat colors, top material options, poly shells
05	Warranty & Care Keep under covered sheltered areas out of direct weather and sunlight

PAVILION

SEMI-PERMANENT OUTDOOR SPACES

Quality tables and chairs used in pavilion style patios remain at the ready for spontaneous meetings or heads down work. Unlike your typical lawn chairs, choosing products that are made for your work will help with ergonomics and productivity.

Versteel's Pavilion line up can be kept outside under shelter and out of direct sunlight.



Deci

SUPER SLEEK AND ULTRA STABLE

Deci won't wobble, wiggle or waver when put to the test in today's most demanding and diverse environments. Underneath the super sleek and delicate appearance is a laser cut, solid steel plate which provides stability and balance. Adjustable glides are standard on every Deci base for leveling in uneven environments.

MIX OR MATCH

It's super simple, pair round tops with round bases, or square tops with square bases. Want to mix and match? Have at it! Rectangular top shapes are available and require multiple bases (choose from round or square).

HEIGHTS

Available in seated (29") and stand-up (42") heights, or choose an alternate height.

CUSTOMIZE

We're flexible! If you want or need a different shape or size, let's work together.



Deci T-Base

A BREATH OF FRESH AIR

Evolve the way you work & learn with the Deci T-base. Built with American craftsmanship, tables with this rectilinear base can be set outdoors in covered pavilions without having to be brought in every night. Enjoy fresh air while stimulating productivity in outdoor classrooms and meeting areas.

PRACTICAL

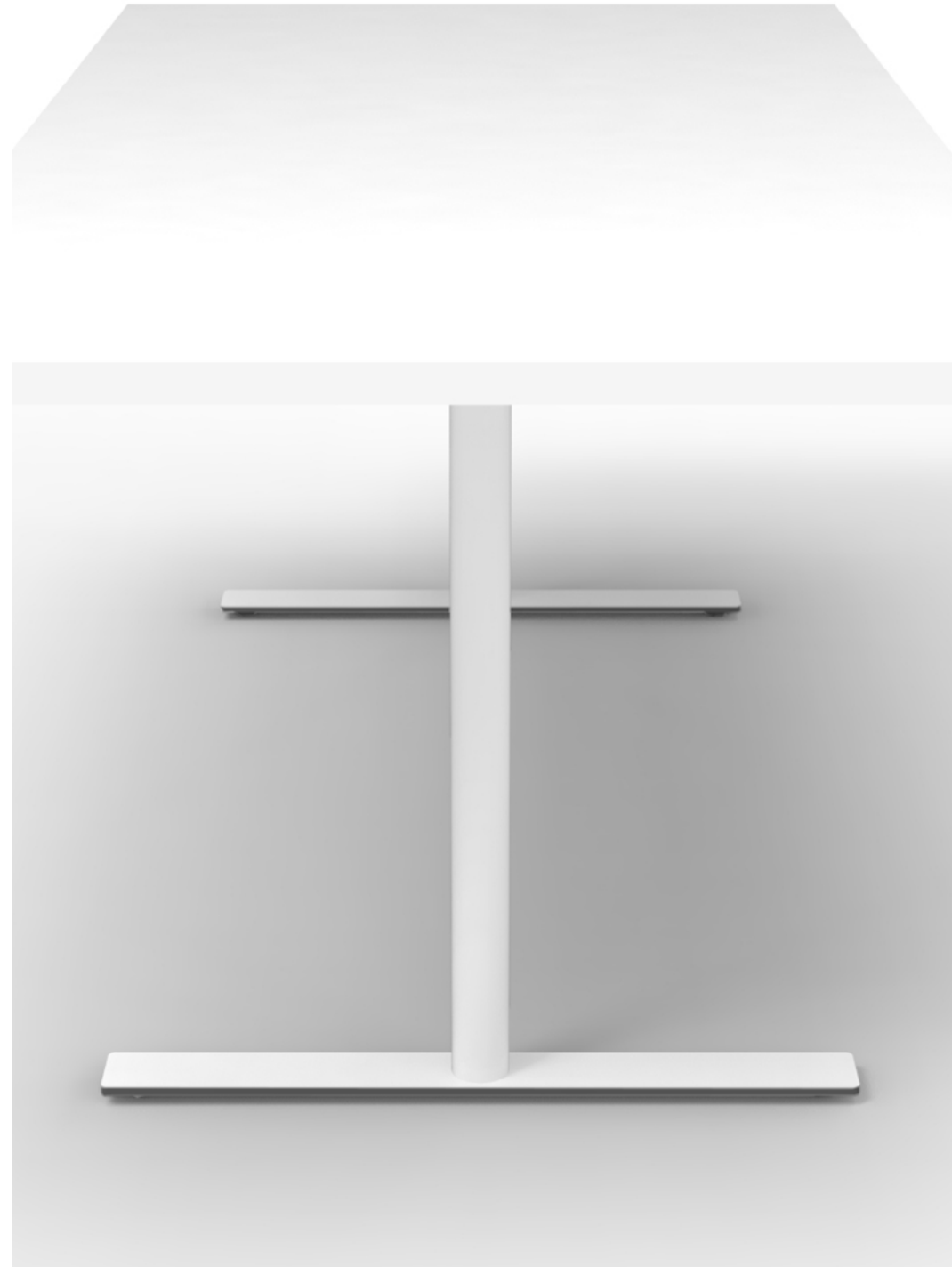
T-bases provide ADA approved clearance and are durable enough to withstand outdoor elements under covered shelter. Rearrange tables into collaborative or individual settings. Deci works for you!

PRODUCTIVE

Flex for varying uses, whether relaxing on break, inspiring the next generation or conquering a big breakthrough.

ADJUSTABLE

Exterior ground surfaces are unpredictable. Adjustable glides keep tables level in uneven environments.



OH! Pull-Up Table

CASUAL. WORKABLE. EFFICIENT.

Perfect for a cup of coffee, a personal electronic device or anything that you might want to keep close at hand. The heavy-duty and durable base of the OH! Pull Up Table will offer years of service both indoors and in covered outdoor settings. The round, space-saving shape is designed for comfort and ease of use.

PORTABLE

Move it here. Move it there. Move it anywhere! A solid, weighted base keeps the OH! Pull-Up Table stable, yet it remains lightweight enough to relocate and position as the need arises.

FEATURES

The low profile base ships fully assembled. Corian® tops are standard with a reverse bevel edge.

PETITE

Not too big and not too small, the 14" diameter top is just the right size for a personal table. At 25.5" high, it works well with lounge or guest seating.



Quanta Max

BEAUTIFUL. VIBRANT. STACKABLE.

Quanta Max is artistically crafted with the strength and durability that is expected from a Versteel product.

Made of high density poly resin and a steel frame, these versatile chairs are stackable, cleanable and hold up to outdoor use. Personalize your space with bold and neutral color options for the seat and frame.

PLENTIFUL

Quanta Max is a family of plentiful solutions for working, learning and relaxing. Armless chairs, stools and beam seating are adaptable for outdoor use. Base styles include sled or 4-leg. Stool height available in 24" and 29".

ERGONOMIC

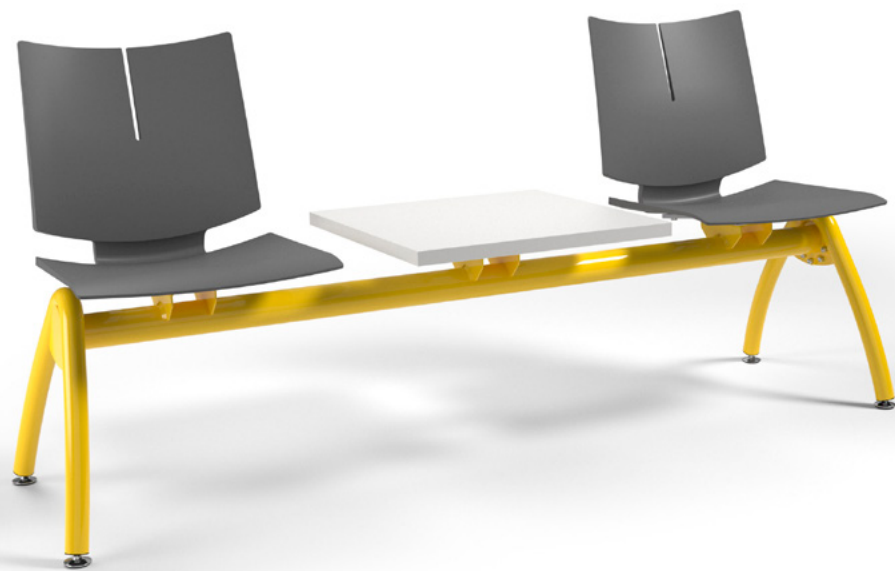
The flexible back is designed to move with you, interacting with your motions and gestures.

STACKABLE

Chairs easily stack ten high on the floor and twenty high on a trolley.



Quanta Max



Sate

FLUID. FLEXIBLE. FABULOUS.

Sate has a beautiful, modern design that balances a thin profile with the stability of steel and polypropylene. An ergonomic flex motion design provides continual support, and a design-driven grommet to make it easy to carry.

Rearrange, stack and transport chairs for multi-use indoor and outdoor spaces.

DYNAMIC

Sate's innovative flex motion back conforms to your body and allows for easy movement. This flexibility encourages a healthy posture and a comfortable sit for both its chairs and stools.

LESS IS MORE

The ultra thin polypropylene shell and curvilinear legs create a structurally sound, minimal design.

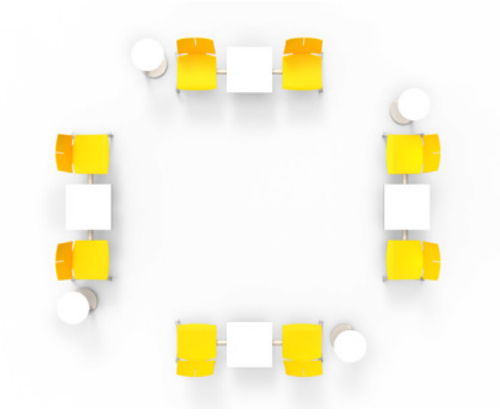
STACKABLE

Chairs easily stack ten high on the floor and twenty high on a trolley.

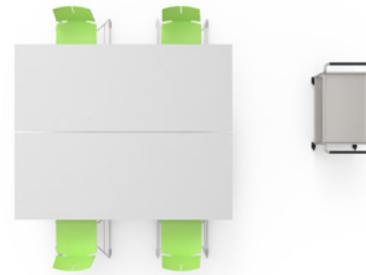


Work Styles

How will you use your outdoor space?



RELAXED
Lounge Work / Dine



COMMUNAL
Social Based Work



FOCUSED
Individual/Class Work

RELAXED

LOUNGE WORK / DINE

Some of the greatest breakthroughs come from a wandering mind. When you get stuck on a problem, taking time to disengage and rest often resets your focus. So take a break. Grab a coffee with a coworker. Pull up a chair and enjoy the sounds of nature. Stimulate those ideas that are tickling in the back of your brain.







COMMUNAL

SOCIAL BASED WORK

Virtual communication has come a long way, and took a giant leap forward in 2020. Yet there's no denying the magic of face-to-face interaction. Providing a safe, physical space for brains to collaborate generates ideas and fuels productivity.





FOCUSED

INDIVIDUAL / CLASS WORK

It's great to break away for a moment to daydream or to brainstorm with colleagues. Occasionally, though, you need heads down focus time. You may be a school bringing a classroom outdoors or you could be a company providing an enclave for individualized work. Whatever the purpose, Versteel offers a healthy solution to stimulate innovation.





CONTENTS

01

Pavilion Outdoor Spaces

Semi-permanent outdoor sheltered areas

Deci, OHI, Quanta Max, Sate

02

Pop-Up Outdoor Spaces

Temporary outdoor sheltered areas

Adaptable for most Versteel Products

03

Power, Storage & Collaboration

V Power System, Entourage Utility Carts, Mobile Screens
with writable white powder coat

04

Materials

Outdoor primer process, powder coat colors, top material
options, poly shells

05

Warranty & Care

Keep under covered sheltered areas out of direct weather
and sunlight

POP-UP

TEMPORARY OUTDOOR SPACES

A Pop-Up environment is a scheduled or temporary work and learning climate. This equitable solution is especially pivotal when larger spaces are needed, such as classrooms.

Most Versteel products can be adapted for temporary setups, away from weather and under covered shelter. Products adapted for temporary outdoor use must be brought in each day and not exposed to weather.

Versteel can provide a full Pop-Up solution, including recommending a resource for tents. Contact our Customer Service for more information.



Performance

GET WORK DONE

Performance tables are precisely engineered to balance style and endurance for high-use conditions. Raising the bar for versatility, these multi-purpose tables provide flexibility for working, learning and dining. Fold and stack tables on a cart for easy transportation to and from an outdoor Pop-Up space.

RESOURCEFUL

Performance is designed as a sophisticated yet highly functional table to be used for varying applications, providing solutions from the agile collaboration space to the interactive classroom and more.

VERSATILE

Training tables adjust, link, tilt, fold, roll or nest - whatever your space needs.

MOBILITY

Whether on casters or stacked on a cart, rolling is easier than lifting.



ODIS

ON DEMAND NIMBLENESS

From classes and training to impromptu group meetings, ODIS delivers ultimate versatility. Beautiful lines create a graceful combination of form and function. Designed to flex with the demands of dynamic spaces, it is petite in size, easily portable and stacks on a transport cart. Take it outside and set up with minimal effort.

DIVERSE

Scaled for adults (29"H) or youth (23"H) with laminate tops and a wide offering of powder coat colors. The ODIS ADA has a 25" x 32" worksurface and accommodates a larger classroom even when six feet apart.

DILIGENT

Linking is integrated into each table. Add optional personal storage for books and items.

ODIS

On Demand Individual Stacker. Need we say more?



Chela

GET COMFORTABLE

Chela has a molded, satin shell that floats and flexes with you for maximum comfort. Built to be both functional and elegant, it's light on the eyes while standing up to tough use. Chela has various styles and numerous options to make it equally at home in the classroom, meeting space or dining area.

SUSTAINABLE

Made of a polypropylene shell and powder coated steel frame, Chela is both extremely cleanable and resilient. These materials deter microbial growth and withstand abuse from frequent cleaning or temporary outdoor use.

EDUCATION

Add a tilting tablet arm and book basket to chairs for a durable and design-driven education seating solution.

PORTABLE

Casters or glides make rearranging quick and easy. Stack chairs up to twenty high on a cart for efficient transport.



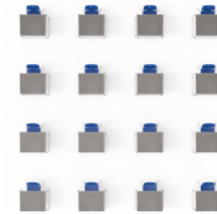
MAKE THINGS EASY

Choosing products that are mobile or stackable will assist in quick set up and tear down. Get the most out of your investment - these products serve just as much purpose indoors as they do out!



Space Design

ODIS is one of the many tables that can be adapted to Pop-Up Outdoor Spaces. It is sized in that sweet spot where it's big enough to provide a sufficient workspace yet compact enough to be easily portable and accommodate large numbers in a defined area.



16 TABLES
20' x 20' space



25 TABLES
27' x 26' space



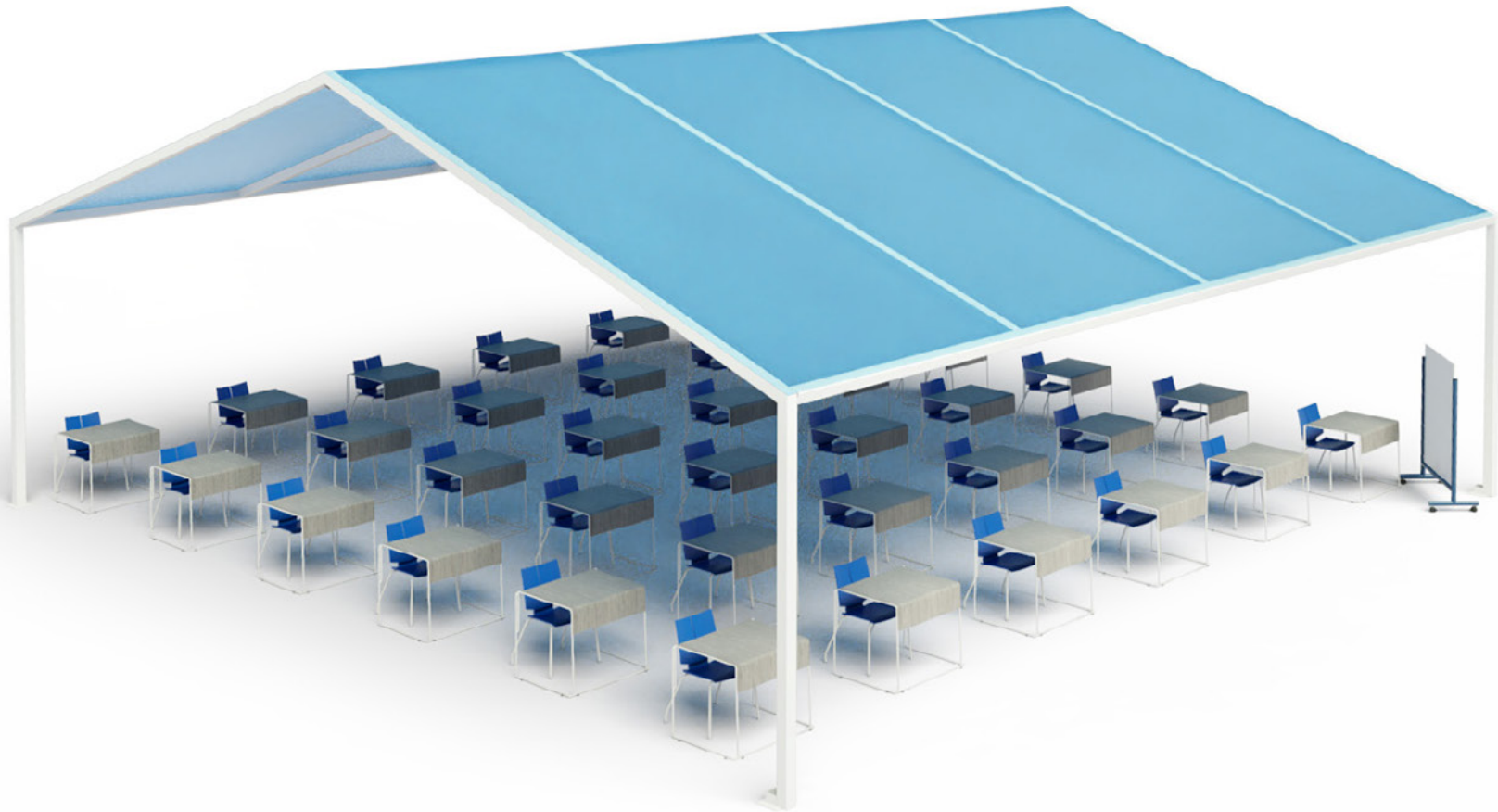
36 TABLES
32' x 32' space



16 WORKSURFACES
20' x 20' Space



25 WORKSURFACES
27' x 26' Space



36 WORKSURFACES
32' x 32' Space

CONTENTS

01

Pavilion Outdoor Spaces

Semi-permanent outdoor sheltered areas

Deci, OHI, Quanta Max, Sate

02

Pop-Up Outdoor Spaces

Temporary outdoor sheltered areas

Adaptable for most Versteel Products

03

Power, Storage & Collaboration

V Power System, Entourage Utility Carts, Mobile Screens
with writable white powder coat

04

Materials

Outdoor primer process, powder coat colors, top material
options, poly shells

05

Warranty & Care

Keep under covered sheltered areas out of direct weather
and sunlight

V Power

STAY CHARGED ON THE GO

V Power supports diversity and flexibility in a fluid environment. Utilizing cordless, battery-powered charging, it attaches to the edge of each worksurface, giving individuals and teams the freedom to work or learn anywhere. Sold in bundles with rechargeable batteries, clamp-on charging units and battery charger.

THE TECHNICAL STUFF

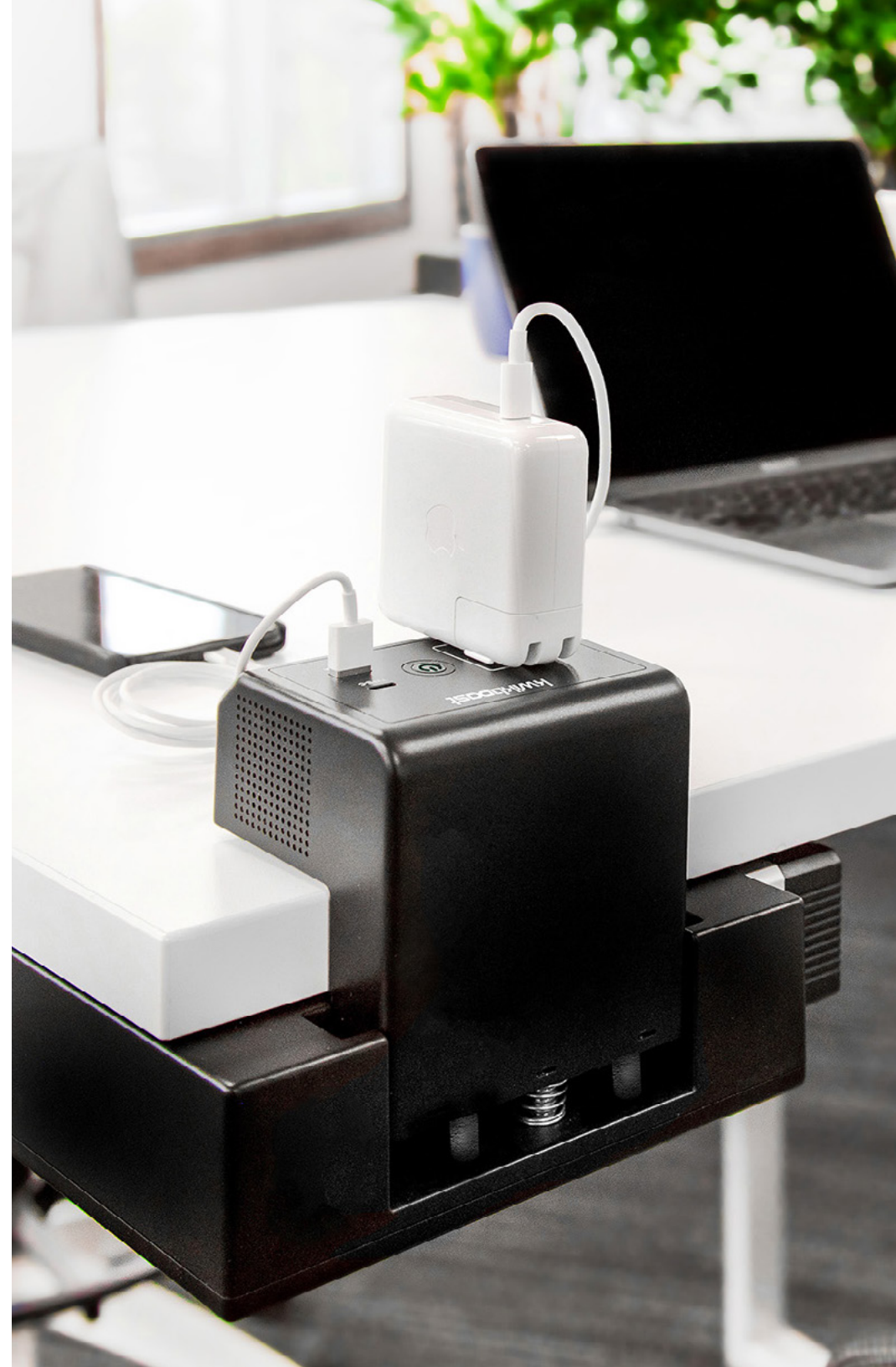
Charging unit is adjustable and attaches to 0.7" to 1.5" tops. It includes a 110V AC outlet, USB-A port and a USB-C PD port. It's capable of charging laptops, tablets, phones, etc.

OUTDOORS

Recommended temperature is 32 to 113°F while in use. Avoid taking outdoors when raining or snowing.

RECHARGEABLE

Rechargeable battery is easily interchangeable. Chargers come in single, 3-bay or 9-bay stations.



Entourage Open Cart

ELEGANT AND CONVENIENT

Save your arms and your steps! The Entourage Open Cart can do the work for you. Built to last with a steel frame and two shelves, load it up with everything you need in your outdoor space. Then lock the casters and use it as stationary storage. Stay organized and efficient, no matter where your work takes you.

UTILITY AND SERVICE

The Serving Cart (16" x 30") is the perfect size for beverages and small collaborative meetings. The Utility Cart (20" x 30") accommodates classrooms, larger gatherings and more substantial transportation needs.

FULL MOBILITY

A push bar on either side and four swivel casters allow you to push, pull and turn without limitations.

CASTERS

Locking soft wheel casters absorb impact for quiet protection against rougher-than-floor surfaces.



Mobile Screen

EPITOME OF FLEXIBILITY

Ideal for multi-functional layouts, Mobile Screens can easily be moved to support division, privacy and/or safety. Turn it into a presentation board for indoor or pavilion settings by specifying a metal screen (which is naturally magnetic) and Writable White powder coat. Brainstorm, instruct, draw for fun or write down important notes.

BASE STYLES

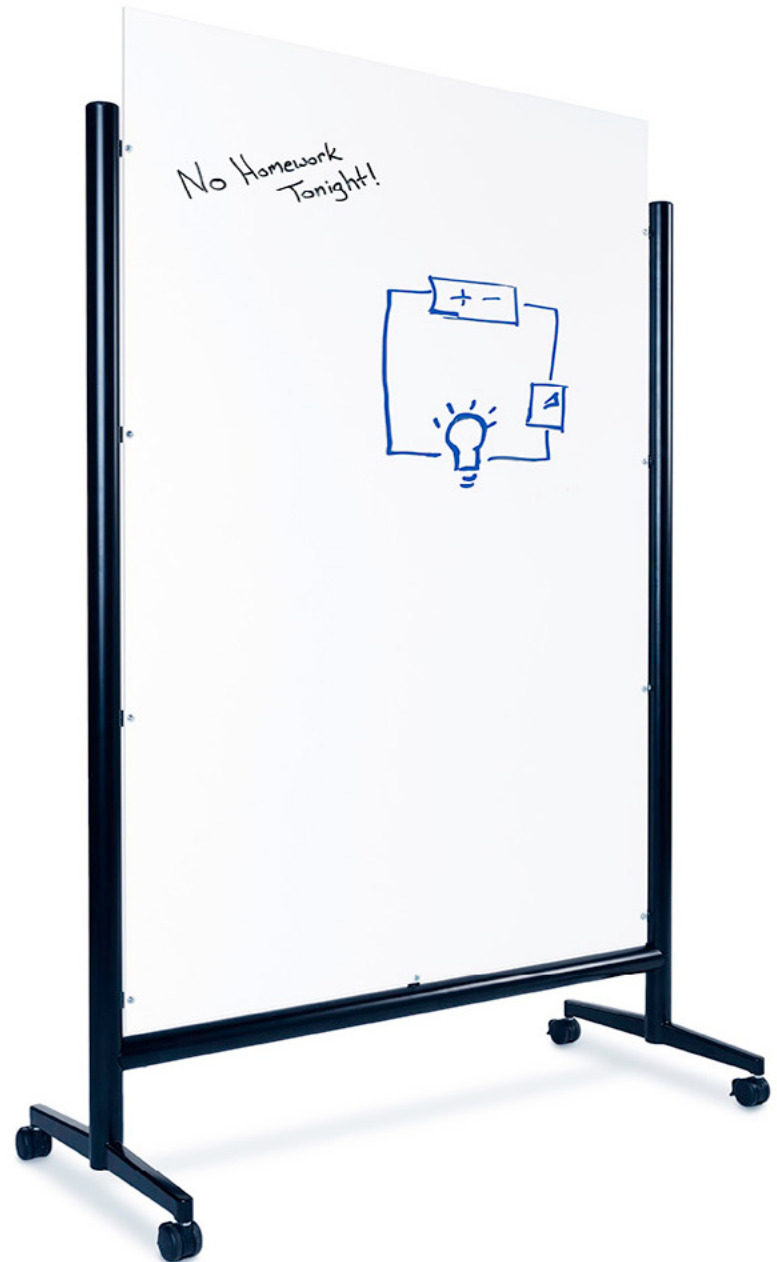
A selection of five base styles seamlessly coordinate with the Versteel collection: Brattice, Eliga, Performance, Skware and Vela. The Quad base, with four locking casters, provides stability for exterior use.

VERSATILE

Mobile Screens lock in place for use as a presentation board and nest into each other for compact storage.

MULTI-PURPOSE

Choose Writable White powder coat for a marker board, or colors to use as a magnetic presentation board.



CONTENTS

01	Pavilion Outdoor Spaces Semi-permanent outdoor sheltered areas Deci, OHI, Quanta Max, Sate
02	Pop-Up Outdoor Spaces Temporary outdoor sheltered areas Adaptable for most Versteel Products
03	Power, Storage & Collaboration V Power System, Entourage Utility Carts, Mobile Screens with writable white powder coat
04	Materials Outdoor primer process, powder coat colors, top material options, poly shells
05	Warranty & Care Keep under covered sheltered areas out of direct weather and sunlight

Powder Coat

METAL FINISHES

Going outdoors should not limit your choices! Utilizing a durable anti-corrosive primer, many of our powder coat colors are available for covered exterior use.



WHITE LINEN



COCONUT



MICA



STONE



CHAMPAGNE



FOSSIL



WHISPER



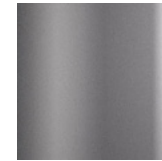
NIMBUS



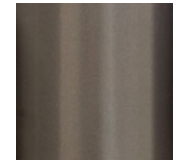
SILVER



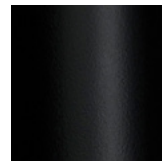
ALLOY



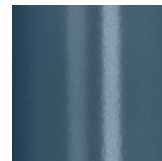
CARBON



BRONZE



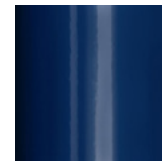
BLACK ANODIZED



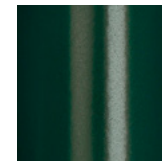
SEASIDE



SHIPYARD



NAVY



FOREST



NUTMEG



POPPY



MINT



CALYPSO



AMETHYST



DAFFODIL



KELLY GREEN



ROYAL



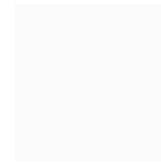
CRIMSON

Poly Shells

QUANTA MAX & SATE

Molded resilient polypropylene resin make up the Versteel poly shells. They are a durable alternative to fabrics and suitable for covered outdoor use. Use soap and water for routine cleaning. Bleach cleanser, isopropyl alcohol and peroxide cleanser can be used for deep cleaning and disinfecting.

Quanta Max & Sate Poly Shells can be used in Pavilion or Pop-Up settings.



SNOW



CANARY



SALSA



COBALT



LIME



PAPAYA



OYSTER



QUARRY



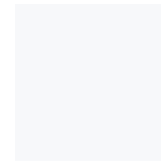
NEAR BLACK

Poly Shells

CHELA

Molded resilient polypropylene resin make up the Versteel poly shells. They are a durable alternative to fabrics and suitable for covered outdoor use. Use soap and water for routine cleaning. Bleach cleanser, isopropyl alcohol and peroxide cleanser can be used for deep cleaning and disinfecting.

Chela Poly Shells can be used in Pop-Up settings only.



FROST



TAPIOCA



SOFT YELLOW



SAGE



CLOUD



SLATE



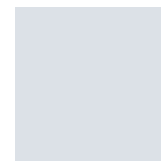
INDIGO



CHOCOLATE



OYSTER



ALLOY



QUARRY



NEAR BLACK

Top Materials

CORIAN®

Corian® solid surface is sustainable with low moisture absorption and is resistant to environmental pollutants, humidity and temperature variations.

POWDER COATED WORKSURFACE

Enduring, economical powder coated worksurfaces marry the benefits of wood and metal while also providing specification flexibility.

OTHER PAVILION MATERIALS

Top materials for long-term Pavilion use also include stainless steel and KrystalCast.

OTHER POP-UP MATERIALS

For short-term Pop-Up applications, certain laminates may be considered. Contact your Versteel Sales Representative for more information.



CONTENTS

01

Pavilion Outdoor Spaces

Semi-permanent outdoor sheltered areas

Deci, OHI, Quanta Max, Sate

02

Pop-Up Outdoor Spaces

Temporary outdoor sheltered areas

Adaptable for most Versteel Products

03

Power, Storage & Collaboration

V Power System, Entourage Utility Carts, Mobile Screens

with writable white powder coat

04

Materials

Outdoor primer process, powder coat colors, top material

options, poly shells

05

Warranty & Care

Keep under covered sheltered areas out of direct weather
and sunlight

WARRANTY & CARE

Versteel products adapted for use in outdoor Pavilion or Pop-Up settings are covered under a three year warranty from date of purchase against defects in materials and workmanship. Products must be used in covered areas away from direct sunlight and weather. Be sure to discuss your specific project needs with your sales representative.

[View Full Warranty](#)



Q&A

HOW TO ORDER

Versteel Pavilion and Pop-Up products are project based.
Contact your Versteel Sales Representative to get started.

OUR MISSION

Provide quality Pavilion and Pop-Up outdoor furniture
solutions for working and learning environments.

CONTACT US

versteel.com

800 876 2120

Made in America